

COLONIAL COURT



Colonial Court Drive—Plan D

Colonial Court is Southwest County's newest "close-in" neighborhood, offering a remarkable energy package that helps keep electric bills low. This particular home offers 1 level living at it's finest. Formal Dining Room, Eat-in-Kitchen, Living Room, Sunroom, 2 Bedrooms and 2 Baths all on one level. Upstairs offers large Bonus Room with Full Bath and 3rd bedroom. Choose to keep this as storage or finish for extra square footage. Close in County location keeps dining, shopping, and health care all at your fingertips.

**Another Winter-Fields,
LLC Development
Southwest Roanoke
County**

- ◆ Extra square footage on 2nd floor
- ◆ Extra wide double car garage
- ◆ Bonus room for added storage, guest suite, or rec room
- ◆ Southwest Roanoke County

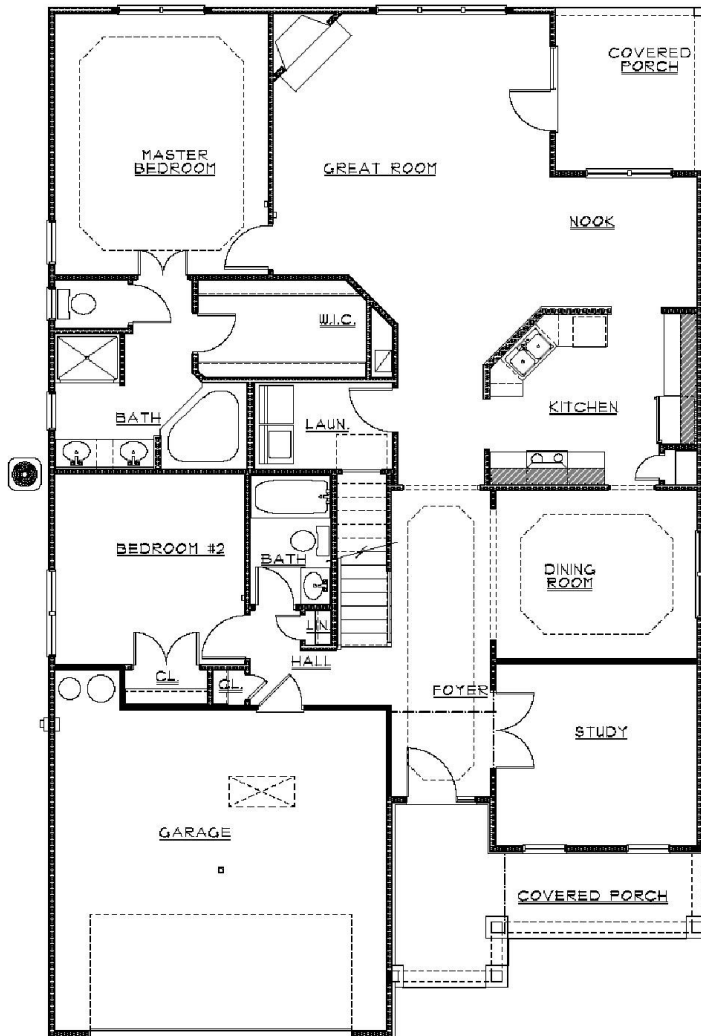
Fields
CONSTRUCTION, INC.
ROANOKE, VA

540.387.4580 phone
540.387.4581 fax

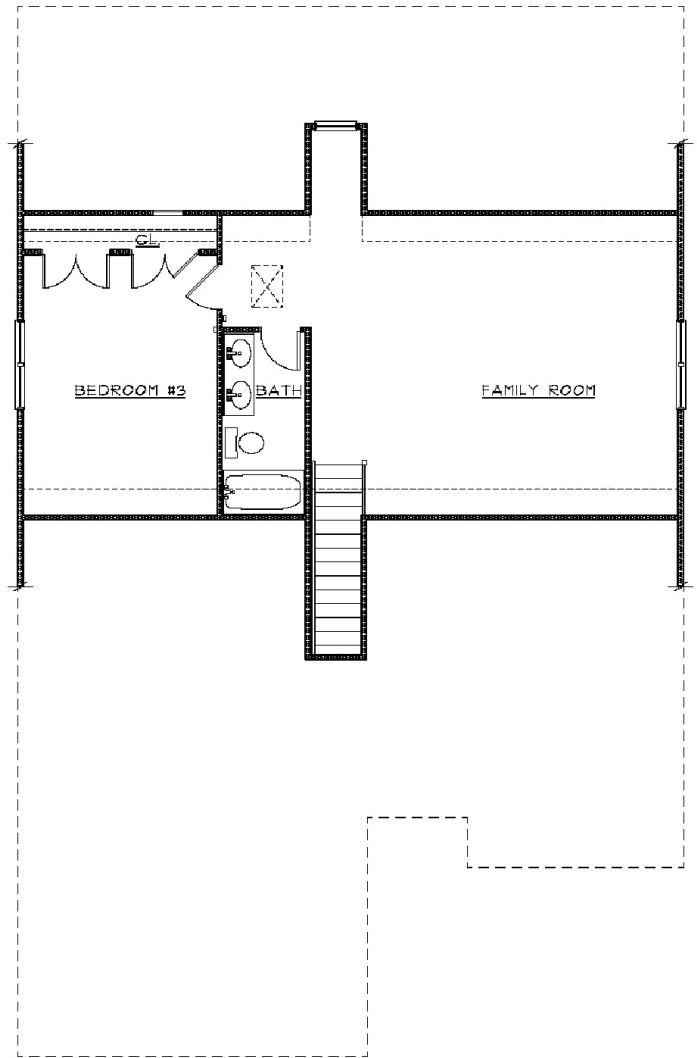
www.FieldsConstruction.com

COLONIAL COURT

Plan "D"



1st Floor



2nd Floor

Additional floor plans available with options and upgrades. This community offers floor plans ranging in square footage from 1800 square feet to 2600 square feet. Contact Fields Construction or our REALTOR for available plans and pricing.

Fields Construction attempts to ensure the information presented in all marketing material is accurate. Floor plans, elevations, and specifications are subject to change without notice. All square footage is approximate.

