

CHANTILLY PLACE LUXURY PATIO HOMES



Chantilly Place - Building 2 - 1 Level Floor Plan

This new plan at Chantilly Place offers all the same luxuries as our larger units but on a more manageable scale. The one level floor plan is approximately 1370 sqft. It offers 2 Bedrooms, 2 Full Baths, Kitchen with island that opens into Great Room. The Great room features gas log fireplace and access to the Covered Porch. Also in this plan is a wide Single Car Garage with extra storage alcove and exterior storage closet off the rear porch. Chantilly Place is conveniently located just seconds from The Roanoke Athletic Center, loads of shopping & dining, and interstate 581.



Another *Winter-Fields*,
LLC Development
Southwest Roanoke
County

- ◆ 1370 Finished square ft. of living space
 - ◆ All one level
 - ◆ Great covered Porch
- ◆ Single Car Garage w/ storage alcove
 - ◆ Southwest Roanoke County

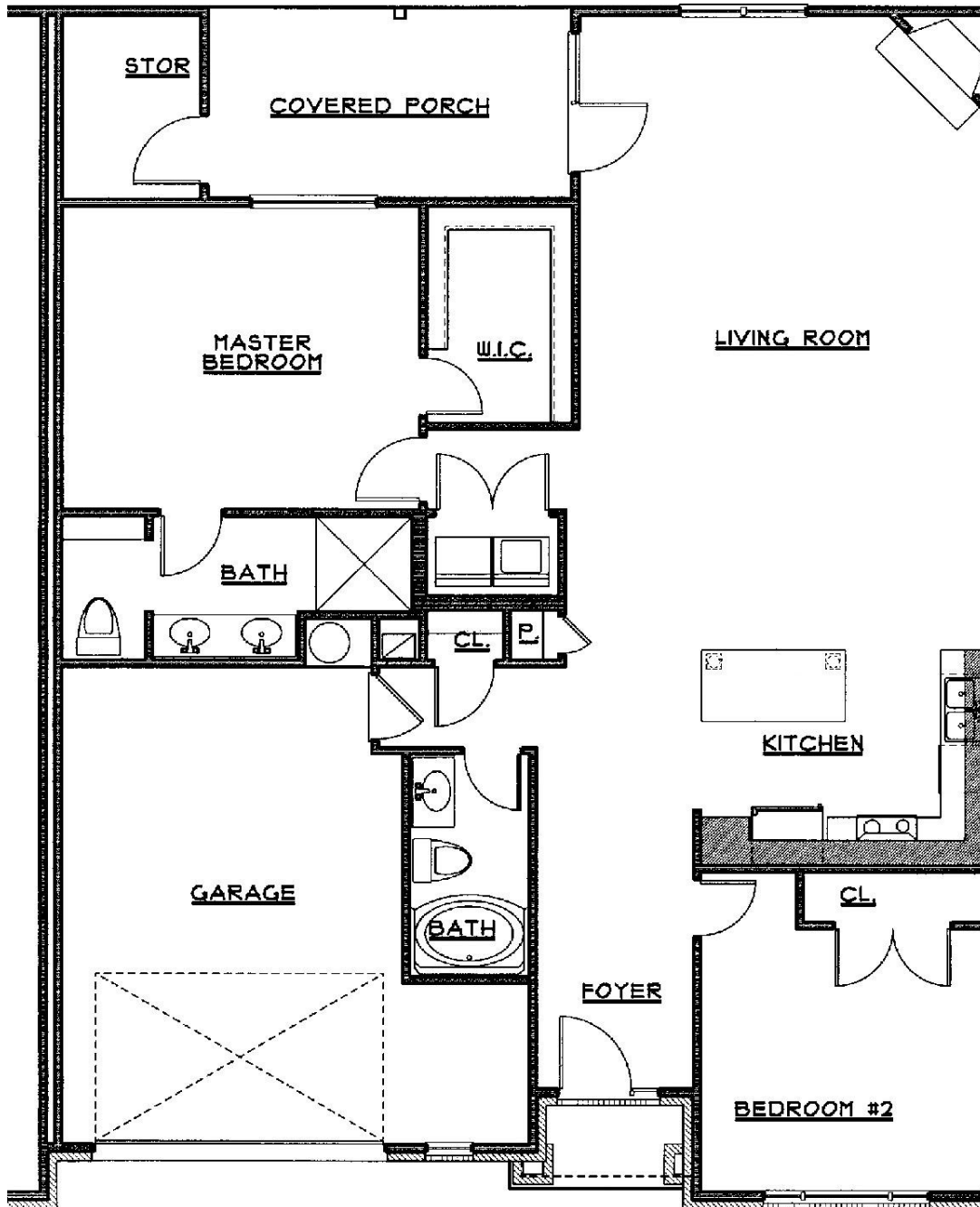
www.FieldsConstruction.com

Fields
CONSTRUCTION, INC.
ROANOKE, VA

540.387.4580 phone
540.387.4581 fax

CHANTILLY PLACE LUXURY PATIO HOMES

Single Floor Plan - Apx. 1370 Sqft.



Additional floor plans available with options and upgrades. This community offers floor plans ranging in square footage from 1370 square feet to 2600 square feet. Contact Fields Construction or our REALTOR for available plans and pricing.

Fields Construction attempts to ensure the information presented in all marketing material is accurate. Floor plans, elevations, and specifications are subject to change without notice. All square footage is approximate.

