



# ALTAMIRA

Another Winter-Fields, LLC Development in Botetourt County



## The Clairmont

The Clairmont plan is our comfortable middle size floor plan. It offers the sensible flow of The Davis with larger Master Suite and Formal Dining Room. Single level floor plan presents 3 Bedrooms, 2 full Baths, and separate Laundry Room. Master Suite includes his and hers walk-in closets and oversized soaking tub in the bath. The Kitchen opens into the Great Room with breakfast bar seating and pantry. Lots of options and upgrades available for this low maintenance home.

**RE/MAX**<sup>®</sup>  
Valley, REALTORS.

Nathan Hungate, REALTOR

REMAX Valley

Cell: 540.309.0266

nhungate@msn.com

- ◆ 1663 Finished square feet of living space
  - ◆ 3 BR and 2 BA
  - ◆ Breakfast bar in Kitchen
- ◆ Cloverdale Elem., Read Mountain Middle, Lord Botetourt High

[www.FieldsConstruction.com](http://www.FieldsConstruction.com)

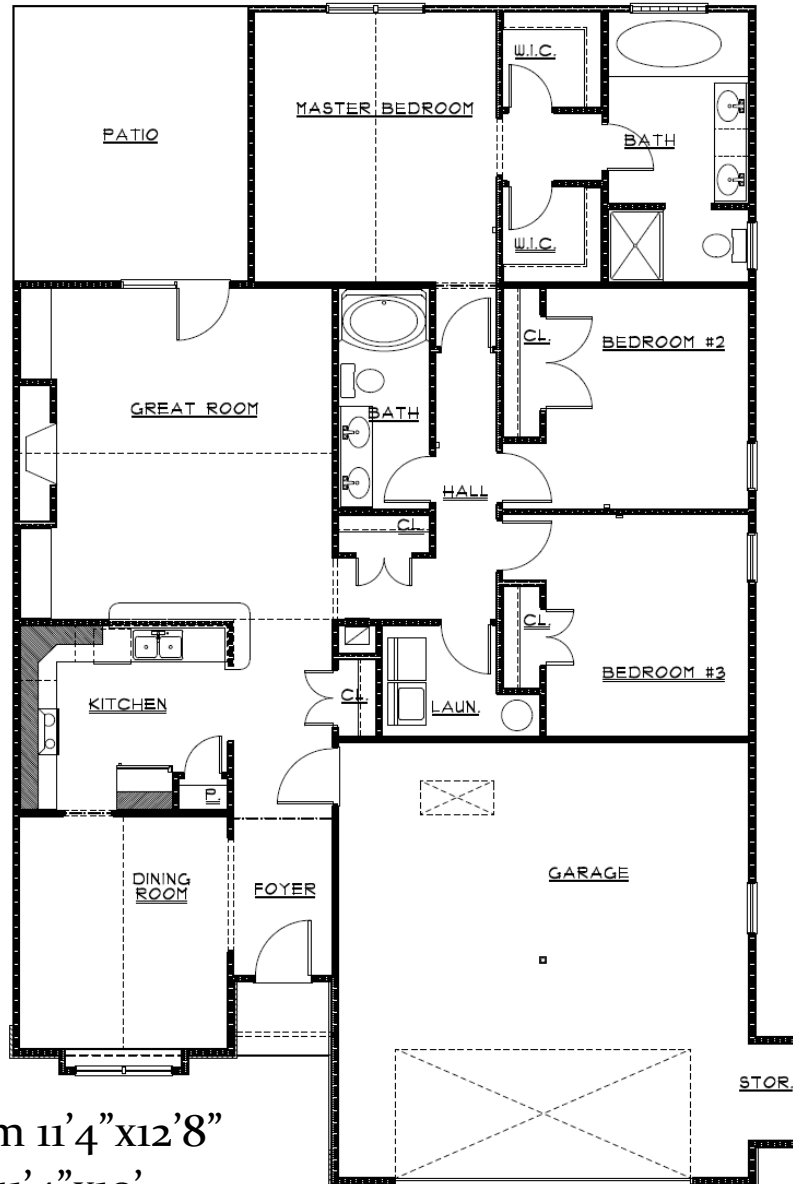
**Fields**  
CONSTRUCTION, INC.  
ROANOKE, VA

540.387.4580 phone

540.387.4581 fax



# The Clairmont



- Dining Room 11'4" x 12'8"
  - Kitchen 11'4" x 10'
  - Living Room 18' x 17'
- Master Bedroom 14'8" x 13'
- Bedroom 2 and 3 11' x 12'
  - Garage 22'3" x 23'8"
  - Patio 15' x 13'



Nathan Hungate—REALTOR  
REMAX Valley  
Cell: 540.309.0266  
nhungate@msn.com  
www.RoanokeSalem.com

